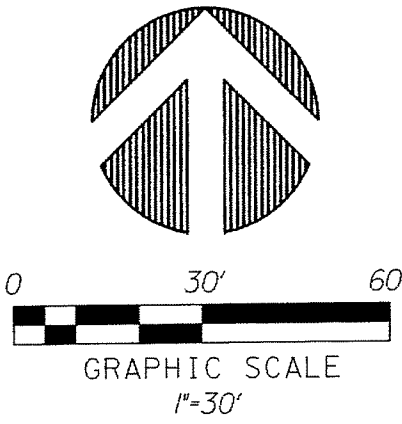


PERIMETER SURVEYING & MAPPING

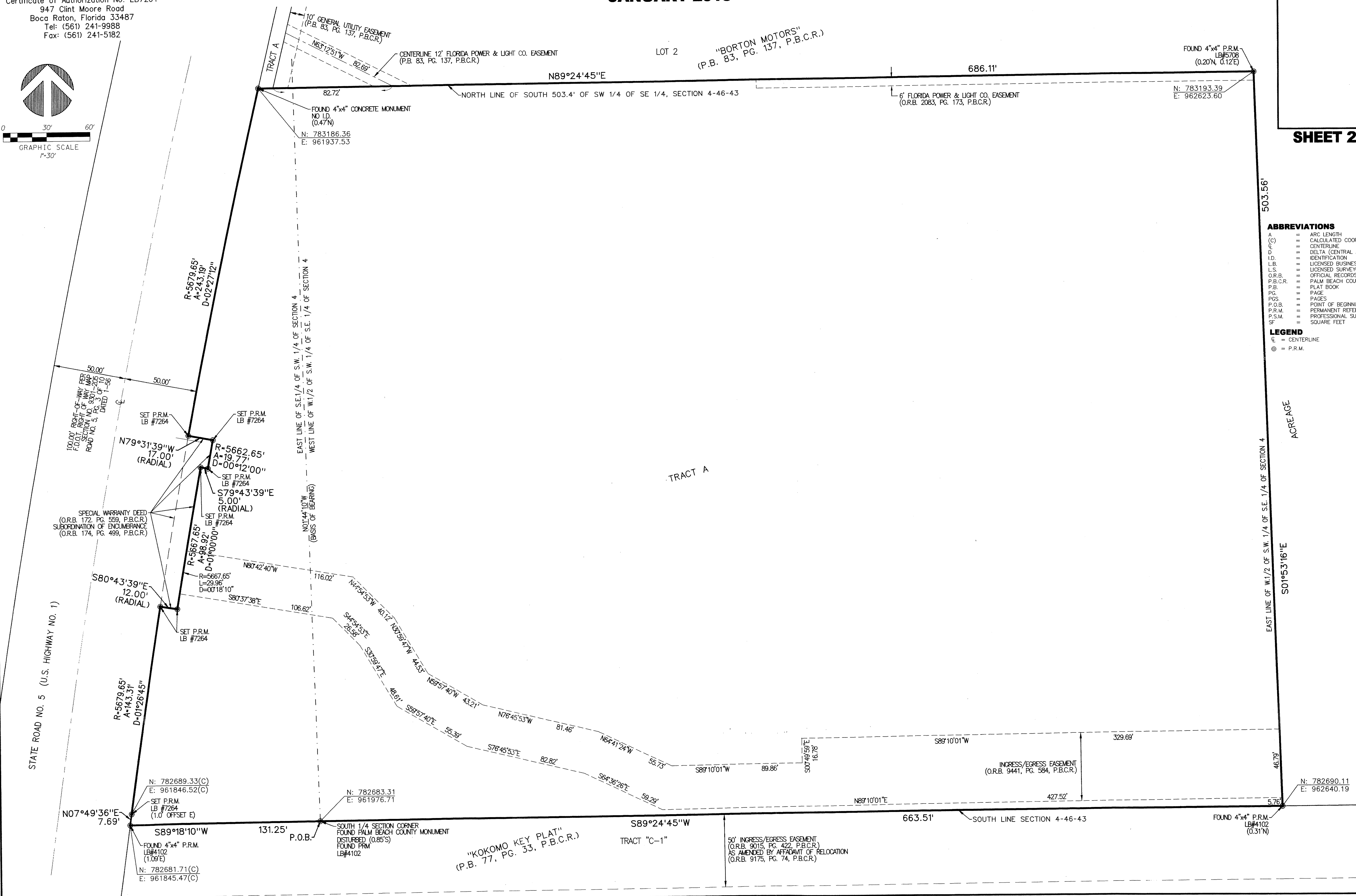
Prepared by: Jeff S. Hodapp, P.S.M.
Certificate of Authorization No. LB7264
947 Clint Moore Road
Boca Raton, Florida 33487
Tel: (561) 241-9988
Fax: (561) 241-5182



DELRAY PRESERVE A PORTION OF THE SOUTHEAST ONE-QUARTER TOGETHER WITH A PORTION OF THE SOUTHWEST ONE-QUARTER SECTION 4, TOWNSHIP 46 SOUTH, RANGE 43 EAST, CITY OF DELRAY BEACH, PALM BEACH COUNTY, FLORIDA JANUARY 2015

134

SHEET 2 OF 2



- ABBREVIATIONS**
- A = ARC LENGTH
 - C(C) = CALCULATED COORDINATE
 - CL = CENTERLINE
 - Δ = DELTA (CENTRAL ANGLE)
 - I.D. = IDENTIFICATION
 - L.B. = LICENSED BUSINESS
 - L.S. = LICENSED SURVEYOR
 - O.R.B. = OFFICIAL RECORDS BOOK
 - P.B.C.R. = PALM BEACH COUNTY RECORDS
 - P.B. = PLAT BOOK
 - PG. = PAGE
 - PGS. = PAGES
 - P.O.B. = POINT OF BEGINNING
 - P.R.M. = PERMANENT REFERENCE MONUMENT
 - P.S.M. = PROFESSIONAL SURVEYOR & MAPPER
 - SF = SQUARE FEET

- LEGEND**
- = CENTERLINE
 - ⊙ = P.R.M.

503.56' ACREAGE EAST LINE OF W.1/2 OF S.W. 1/4 OF SE. 1/4 OF SECTION 4

501.5316" ACREAGE

S01°53'16"E

46.79'

STATE ROAD NO. 5 (U.S. HIGHWAY NO. 1)

100.00' RIGHT-OF-WAY PER PLAT, TRACT NO. 9347, P.B.C.R. DATED 1-1-98

SPECIAL WARRANTY DEED (O.R.B. 172, PG. 359, P.B.C.R.) SUBORDINATION OF ENCUMBRANCE (O.R.B. 174, PG. 499, P.B.C.R.)

N: 782689.33(C)
E: 961846.52(C)
SET P.R.M. LB #7264 (1.0' OFFSET E)
FOUND 4"x4" P.R.M. LB#4102 (1.09'E)
N: 782681.71(C)
E: 961845.47(C)

N: 782683.31
E: 961976.71
SOUTH 1/4 SECTION CORNER FOUND PALM BEACH COUNTY MONUMENT DISTURBED (0.85'S) FOUND FROM LB#4102

"KOKOMO KEY PLAT" (P.B. 77, PG. 33, P.B.C.R.)

50' INGRESS/EGRESS EASEMENT (O.R.B. 9015, PG. 422, P.B.C.R.) AS AMENDED BY AFFIDAVIT OF RELOCATION (O.R.B. 9175, PG. 74, P.B.C.R.)

INGRESS/EGRESS EASEMENT (O.R.B. 9441, PG. 584, P.B.C.R.)

N: 782690.11
E: 962640.19
FOUND 4"x4" P.R.M. LB#4102 (0.31'N)

EAST LINE OF S.E. 1/4 OF S.W. 1/4 OF SECTION 4
WEST LINE OF W. 1/2 OF S.W. 1/4 OF S.E. 1/4 OF SECTION 4
N01°44'10"W (BASIS OF BEARING)

TRACT A

TRACT "C-1"

S89°24'45"W

N89°24'45"E

NORTH LINE OF SOUTH 503.4' OF SW 1/4 OF SE 1/4, SECTION 4-46-43

686.11'

6' FLORIDA POWER & LIGHT CO. EASEMENT (O.R.B. 2083, PG. 173, P.B.C.R.)

FOUND 4"x4" P.R.M. LB#5708 (0.20'N, 0.12'E)

N: 783193.39
E: 962623.60

LOT 2

"BORTON MOTORS" (P.B. 83, PG. 137, P.B.C.R.)

10' GENERAL UTILITY EASEMENT (P.B. 83, PG. 137, P.B.C.R.)

CENTERLINE 12' FLORIDA POWER & LIGHT CO. EASEMENT (P.B. 83, PG. 137, P.B.C.R.)

FOUND 4"x4" CONCRETE MONUMENT NO I.D. (0.47'N)
N: 783186.36
E: 961937.53

R=5679.65'
A=243.19'
D=02°27'12"

R=5662.65'
A=19.77'
D=00°12'00"

R=5667.65'
A=88.92'
D=01°00'00"

R=5667.65'
A=29.96'
D=00°18'10"

R=5679.65'
A=143.31'
D=01°26'45"

N07°49'36"E
7.69'

S89°18'10"W

131.25'

P.O.B.

S89°24'45"W

S89°24'45"W

663.51'

SOUTH LINE SECTION 4-46-43

427.52'

N89°10'01"E

663.51'

S89°10'01"W

329.69'

5.76'

46.79'

501.5316"

503.56'